

CTH3-A 710 T6 2,2kW F400 (279710106A)

GENERAL DATA



ROOF FAN, AL COWL,400°C/2h

MANUFACTURING FEATURES

- Roof cowl made of aluminium
 - Structure, roof base support and bird protection guard made of galvanised steel.
 - High efficiency backward impeller with self-cleaning system of steel.
 - Standard asynchronous motor with IP-55 protection and Class F insulation.
- Manufactured with standard voltages: 230V 50Hz in single phase motors, 230/400V 50Hz in three phase motors and 400V 50Hz in 2 speed motors

APPLICATIONS

Specially designed for roof installation, they are suitable for:

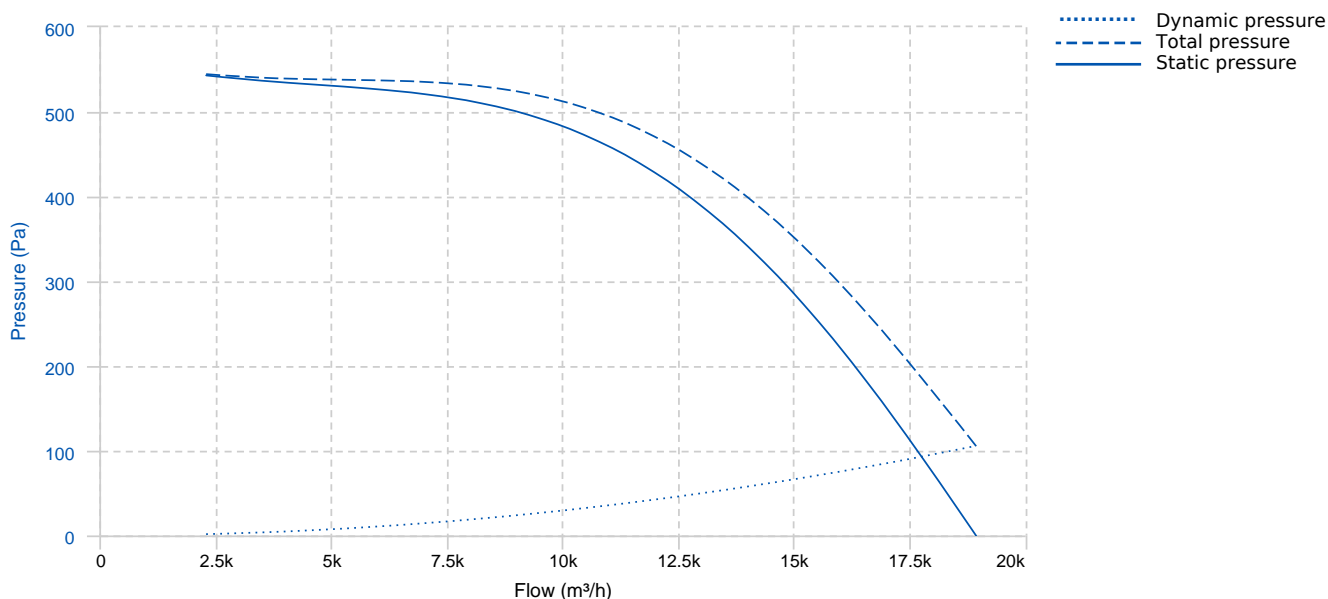
- Smoke extraction.
- Smoke emergency exhaust with motor outside the hazardous area.
- Air renewal in buildings and industries.
- Industrial and professional kitchen hoods.
- Maximum continuous working temperature: carried air 110°C, environment 60°C for three phase and 50°C for single phase motors.

UNDER REQUEST

- 60Hz and special voltages.
- Sparking proof fan with EEx_d certified motor.

Official homologation by the European laboratory APPLUS according to EN 12101-3:2015
Certification Nr: 0370-CPR-2656

PERFORMANCE CURVE

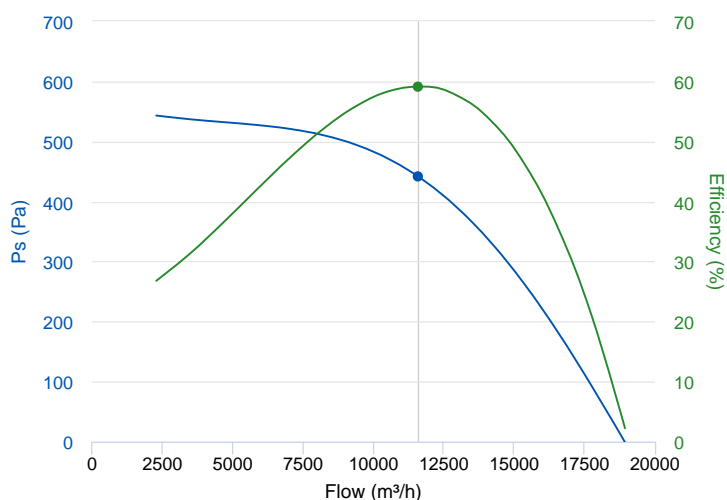


TECHNICAL DATA

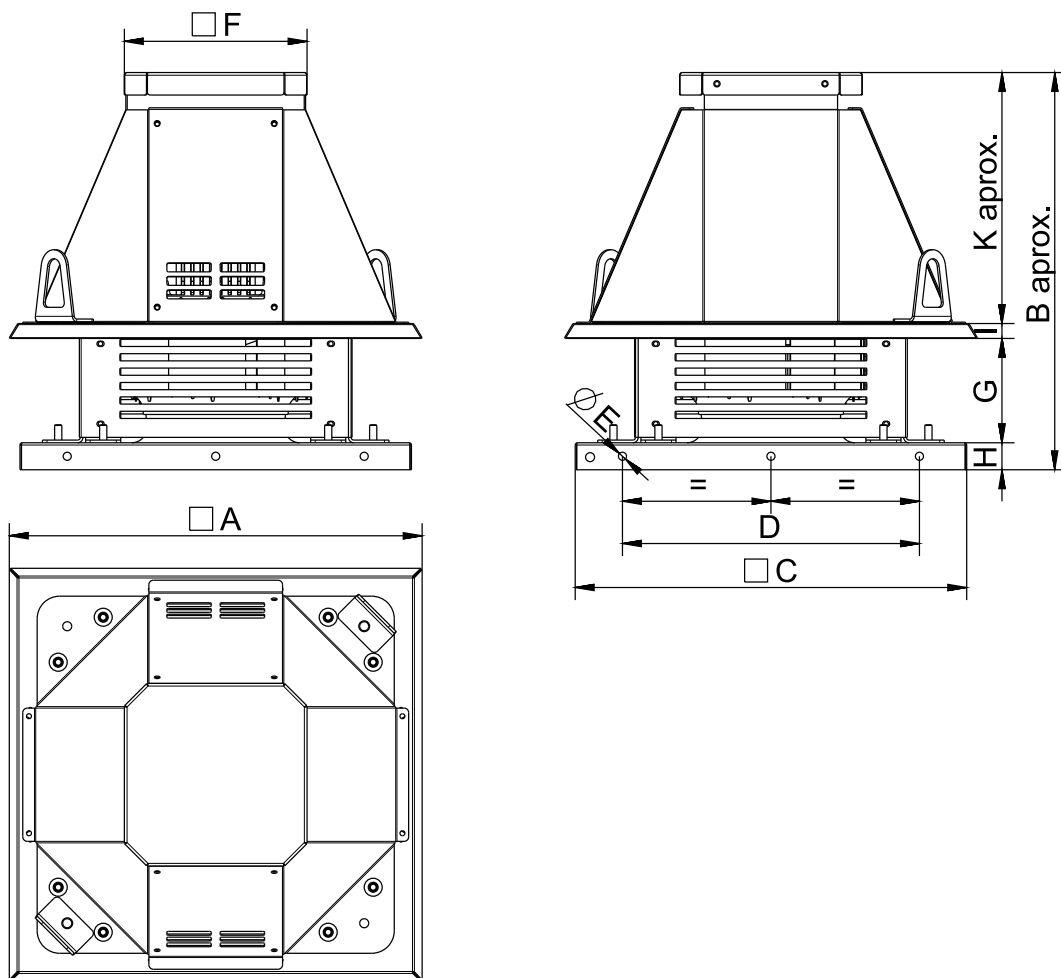
Fan							
RPM	965	Approx. weight	170 kg	Max. Flow	18940 m ³ /h		
Motor							
Power	2,2 kW	RPM	965	I max. (230V)	10,3 A	I max. (400V)	5,94 A
Size	112M	Approx. weight	38 kg	Efficiency (%)	84.3 %	FP	0.64

ERP DATA

Fan data sheet		
Fan type	Unit for non-residential ventilation (LOT 6)	
Typology	Unidirectional	
reports.other	None	
Type of driver	None	
Motor power (kW)	2.2	
	Fan values	ERP Requirements 2018
Max. efficiency (%)	59.15	47.66
Effic. Heat recovery (%)	-	
Pabs (kW)	2.493	
Flow (m ³ /h)	11598.63	
Static pressure (Pa)	441.16	
Speed (m/s)	8.14	
SFP (W/m ³ /s)	773.68	



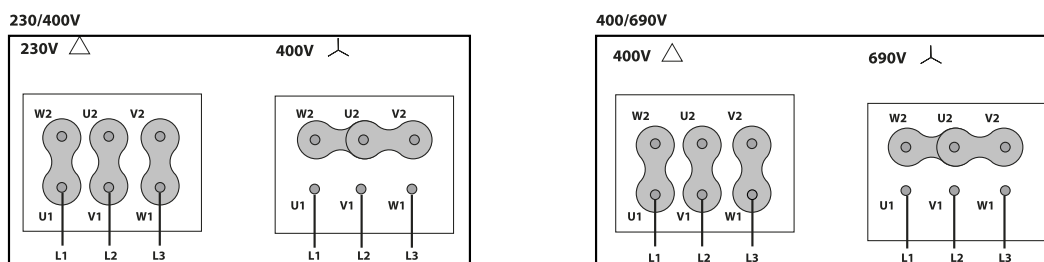
DIMENSIONS



Dimensions (mm)

A	1134,6	B aprox	1116,22	C	1035	D	840	E	9
F	453	G	441,5	H	50	I	31	K aprox	593,72

WIRING DIAGRAM



ACCESSORIES



SAFETY SWITCH
INT 25 3P A
REF: INT253PA



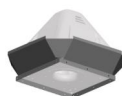
SAFETY SWITCH FOR 400°C/2h
INT 400 25A 3P
REF: 508902501



FIXING KIT FOR CTH3
KF 710-800
REF: 960004660



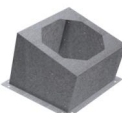
CTH3 TILTING KIT
KB 710-800
REF: 960004560



CTH3 VERTICAL DISCHARGE
KV CTH-3 710-800
REF: 960004760

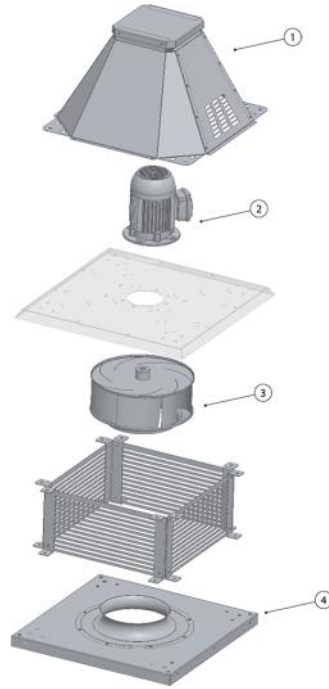


FREQUENCY SPEED CONTROLLER
SFC 400 III 8A *
REF: SFC400III8



INCLINED ROOF FAN SUPPORT
BTI 1015
REF: A-508701015XX

SPARE PARTS



	Code	Model	Qty
1	R-279718491	ROOF COWL CTH3-A 710-800	x1
2	721001261	MOTOR 2,2kW T6 B5 230/400V	x1
3	R-CTB-CTH711-28L G	IMPELLER CTH3 711 D.28 LG	x1
4	R-279711772	INLET-FRAME CTH3 710	x1